

BF&M GOLDEN ACCUMULATOR – SMA FUNDS

BF&M International Equity

As of Dec-10

Benchmark: MSCI EAFE - Price

Fund Philosophy

The BF&M International Equity fund is currently managed by Franklin Templeton Global Investments. The objective of this fund is to provide capital appreciation. It invests in common stocks of non-U.S. companies with good growth prospects, as determined by their team of international analysts. The fund is broadly diversified by sector with the flexibility to invest across regions, industries, styles, and market capitalizations.

Performance Analysis

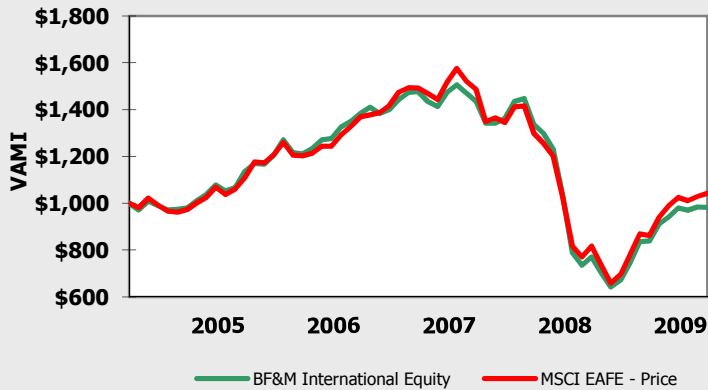
	3 month	YTD	1 Year	3 Year	5 Year
Fund	3.68%	5.46%	5.46%	(10.29)%	(1.80)%
Benchmark	6.23%	4.90%	4.90%	(9.72)%	(0.26)%
Alpha	(2.56)%	0.55%	0.55%	(0.57)%	(1.54)%

	2010	2009	2008	2007	2006	2005
Fund	5.46%	27.55%	(46.33)%	3.71%	21.93%	13.51%
Benchmark	4.90%	27.75%	(45.09)%	8.62%	23.47%	10.86%
Alpha	0.55%	(0.19)%	(1.24)%	(4.91)%	(1.54)%	2.65%

Top 10 Holdings (31 December 2010)

1. Cash
2. Siemens AG
3. Unilever NV
4. Roche Holding AG
5. Glaxosmithkline PLC
6. Rexam PLC
7. Muenchene Ruechversicherungs Gesellschaft
8. Itochu Corp
9. ING Groep
10. Kingfisher PLC

Growth of \$1,000



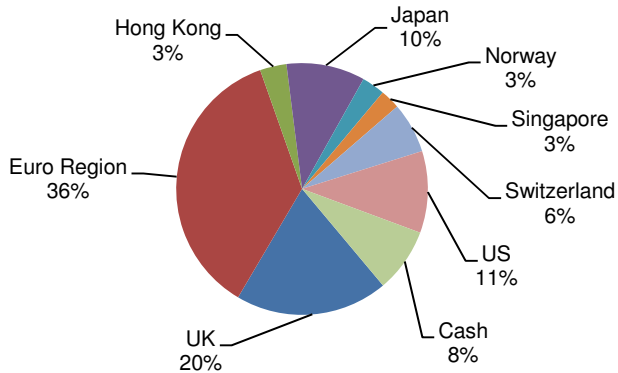
Fund Information

Initial Date	March-1994
Total Assets	\$ 26.6 Million
Managers	Franklin Templeton Global

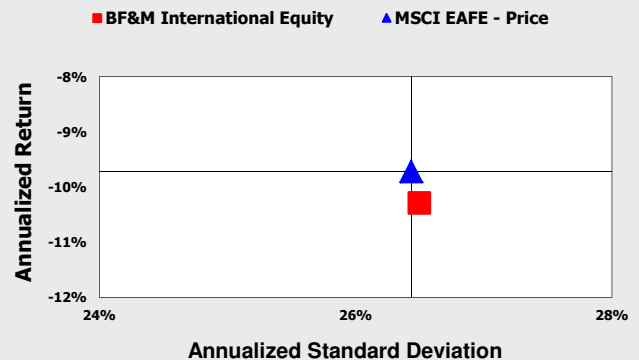
3 Year Statistics

	Fund	Benchmark
Alpha	-0.63%	
Beta	0.99	
R-Squared	0.97	
Standard Deviation	26.50%	27.55%
Sharpe Ratio (5%)	-0.46	
Morning Star Rating	N/A	

Geographic Distribution



3 Year Risk vs. Return Scatterplot



Notes

Past performance is no guarantee of future performance. The price of the shares of each Fund and the income received from each Fund may go down as well as up, and investors may not get back the full amount that they invested. Investment in any of the Funds involves risks, which are described in the Funds' prospectus. Currency fluctuations will affect the value of overseas investments. This Fund may not be offered or sold to citizens or residents of the United States of America.

Information provided by BF&M Investment Services, licensed to conduct Investment Business by the Bermuda Monetary Authority under the Investment Business Act.

Past Performance is not indicative of future results